

# The Woodie CCI Ghost Pattern

Doc Print Date - December 20, 2005



~ Preface ~

*Woodieism: "A ghost is a ghost is a ghost"*

Many successful traders say that a new trader will evolve, given enough time, resources and a good edge. The first two come through determination and hard work, but the third, "the edge" can be hard to come by without a good mentor. Thank you Ken Wood ☺ (aka Woodie)

Woodie's CCI Club: <http://www.woodiescciclub.com/>

The original Woodie Ghost Pattern occurs on the CCI (Commodity Channel Index) indicator every day. It occurs on all time frames and on all markets. It appears in many forms, shapes and sizes. I will try to drill these points home so you will see some redundancy in descriptions on every ghost pattern shown in this document. You will know what I mean when you read it. ☺

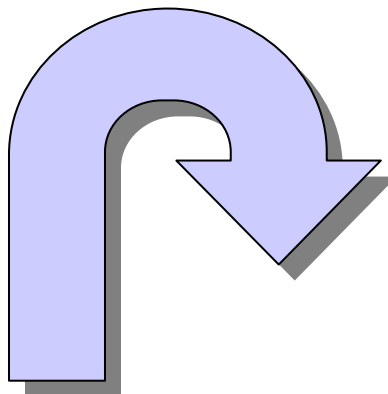
This DOC was created because I felt that many CCI traders are totally missing the entire advantage of the Woodie Ghost Pattern. This is due to the belief that the Woodie CCI Ghost Pattern is always a countertrend pattern, therefore more risky. While I will agree that there are no patterns that work 100% of the time, once you start seeing ALL of the ghost patterns, both trending and counter-trending, you WILL begin to see how you can make them work for you too.

This DOC was also written to show the differences between Woodie's original Ghost Pattern and all ghost patterns that will occur on the CCI indicator every day. If you have been in Woodie's HotComm room for more than a week, I am sure that you have heard Woodie say, "a ghost is a ghost is a ghost" at least 100 times ☺ So, part of this DOC is the natural progression of Woodie's initial ghost pattern.

It has also been noted, that I tend to try to make a ghost out of any two "bumps" that occur on the CCI indicator. To that I reply, youbetcha'... ☺ It has become clear to me that the ghost pattern is a very worthy pattern for both countertrend traders **AND** for trend traders as you will see in this DOC.

The below 'ghost hunt', and subsequent screenshots, are composed of "continuous data." The purpose of this was to show that these patterns can/will happen often, in this case over a 3 day period. I did not have to go to other timeframes or markets to generate any of the screen-shots. It was all one time frame.

**Ok, let's get started..!**



**Contents:**

*Titles below are Hyperlinked for your convenience. You must hold down "Control Key" when clicking.*

**I. Woodie CCI Ghost Pattern Recognition Guide:**

Page Number:

|   |   |
|---|---|
| <a href="#">Woodie's Countertrend Ghost Pattern</a>                   | 3 |
| <a href="#">Woodie's Countertrend Inverted Ghost Pattern</a>          | 4 |
| <a href="#">Woodie's Mittens Countertrend Ghost Pattern</a>           | 5 |
| <a href="#">Woodie's Mittens Countertrend Inverted Ghost Pattern</a>  | 6 |
| <a href="#">Woodie's Hands Up Countertrend Ghost Pattern</a>          | 7 |
| <a href="#">Woodie's Hands Up Countertrend Inverted Ghost Pattern</a> | 8 |

*Natural Progression Ghost Patterns:*

|  |    |
|--|----|
| <a href="#">Inverted Hollow Ghost Up Trending Pattern</a>                            | 9  |
| <a href="#">Hollow Ghost Down Trending Pattern</a>                                   | 10 |
| <a href="#">Hollow Ghost, Countertrend Pattern</a>                                   | 11 |
| <a href="#">Inverted Hollow Ghost, Countertrend Pattern</a>                          | 12 |
| <a href="#">Split Neckline Ghost Pattern</a>   | 13 |
| <a href="#">Split Neckline Inverted Ghost Pattern</a>                                | 14 |
| <a href="#">Neckline Totally Below Zero Line Countertrend Ghost Pattern</a>          | 15 |
| <a href="#">Neckline Totally Above Zero Line Inverted Countertrend Ghost Pattern</a> | 16 |
| <a href="#">Neckline Totally Below Zero Line Trending Ghost Pattern</a>              | 17 |
| <a href="#">Neckline Totally Above Zero Line Trending Ghost Pattern</a>              | 18 |
| <a href="#">Combination Ghost Pattern</a>  | 19 |
| <a href="#">Combination Inverted Ghost Pattern</a>                                   | 20 |

**II. Woodie CCI Ghost Pattern Entry and Exit Guide:**

|  |    |
|--|----|
| <a href="#">Woodie CCI Ghost Entry Possibilities</a> | 21 |
| <a href="#">Woodie CCI Ghost Exit Possibilities</a>  | 22 |

**III. Woodie CCI Ghost Pattern Nuances:**

|  |    |
|--|----|
| <a href="#">Woodie CCI Ghost Target Nuance</a> | 24 |
| <a href="#">Woodie CCI Retrace Nuance</a>      | 25 |

**IV. Woodie CCI Pivot Points:**

|   |    |
|---|----|
| <a href="#">Woodie CCI Pivot Point Filter</a> | 26 |
| <a href="#">Woodie CCI Pivot Point Helper</a> | 27 |

## Woodie's Countertrend Ghost Pattern

(1) The number of bars **above** the zero line defines the trend on a CCI indicator. The 6th bar (normally green) defines the trend as being upward. This means trend traders are looking for long trades at this point. However, countertrend traders begin to look for shorts via the Countertrend Ghost Pattern.

(2) The biggest commonality on the Woodie Countertrend Ghost Pattern is that no two Woodie Countertrend Ghost Patterns are the same, they are all different. This concept can be difficult for those new to pattern recognition. If you are looking for a Woodie Countertrend Ghost Pattern that will have a "specific" and/or "symmetric" quality, you will not be able to see ghost patterns that are "non-specific" and "non-symmetric" by nature. Similar ghosts patterns will only be just that, similar.

(3) The Woodie Countertrend Ghost Patterns, from one ghost to another, will always have different size shoulders, different size heads and will be different in overall size. Therefore, the phrase "weak (left or right) shoulder", "head too big/small", does not apply because they are all different via the nature of the market.

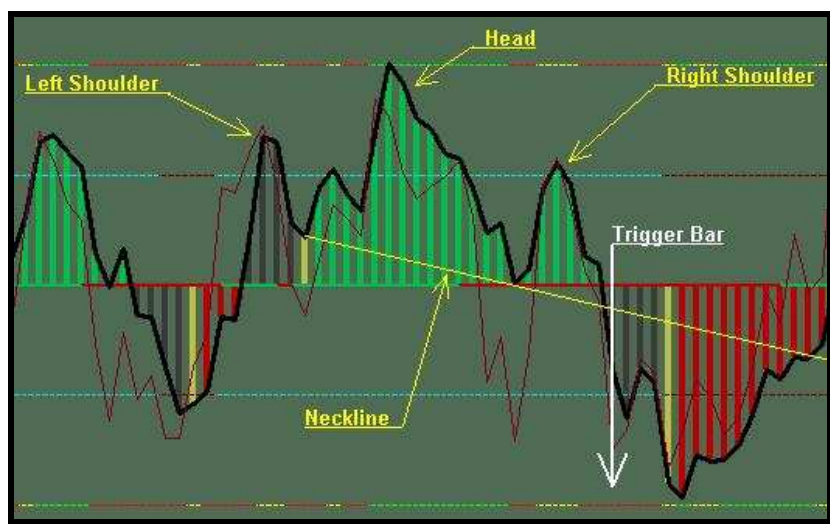


Fig. 1 - Woodie Countertrend Ghost Pattern

(4) The head and shoulders on The Woodie Countertrend Ghost Pattern can be as little as 1 bar wide but can be many bars wide, with no maximum.

(5) The Woodie Countertrend Ghost Pattern head and shoulders can be of any height, from very small to being in extremes (above the +200 on CCI indicator).

(6) The trigger for the Ghost entry is a break of a trendline called "the neckline". It is hand drawn on CCI indicator (either segment or ray) at the swing lows that create the head and shoulders. The trigger for a Ghost is the break of this neckline to downside. Entry can be Conservative, Aggressive, or Very Aggressive.

(7) Woodie has a "preferred location" for the neckline. He wants the neckline to be totally above the zero line on CCI indicator. However, the word "preferred" does not mean that Woodie will exclude a neckline that is slightly below the zero line. As of this date, there is no precise way of determining the maximum amount below zero line that is acceptable.

(8) Woodie has a "preferred slope" of ghost neckline. He wants the neckline to slope towards the zero line. However, the word "preferred" does not mean that Woodie will exclude a ghost trade that is angled away from zero line. As of this date, there is no precise and/or acceptable degree angle, so put away your protractors. :)

(9) All Woodie Countertrend Ghost Patterns are, by nature, a reversal in trend pattern. However, a Countertrend Ghost pattern has limited potential as a Countertrend Trade while still in a trending market. During trending times, a Woodie Countertrend Ghost Pattern will be very hard to trade with profit. Most countertrend traders will switch to trend trading when trending begins.

Notes: Popular Abbreviations for the Woodie Countertrend Ghost Pattern: Gho, gh, gho, G, g.

## Woodie's Countertrend Inverted Ghost Pattern

(1) The number of bars **below** the zero line defines the trend on a CCI indicator. The 6th bar (normally red) defines the trend as being downward. This means trend traders are looking for short trades at this point. However, countertrend traders begin to look for longs via the Countertrend Inverted Ghost Pattern.

(2) The biggest commonality on the Woodie Countertrend Inverted Ghost Pattern is that no two Woodie Countertrend Inverted Ghost Patterns are the same, they are all different. This concept can be difficult for those new to pattern recognition. If you are looking for a Woodie Countertrend Inverted Ghost Pattern that will have a "specific" and/or "symmetric" quality, you will not be able to see ghost patterns that are "non-specific" and "non-symmetric" by nature. Similar ghost patterns will only be just that, similar.

(3) The Woodie Countertrend Inverted Ghost Patterns, from one ghost to another, will always have different size shoulders, different size heads and will be different in overall size. Therefore, the phrase "weak (left or right) shoulder", "head too big/small", does not apply because they are all different via the nature of the market.

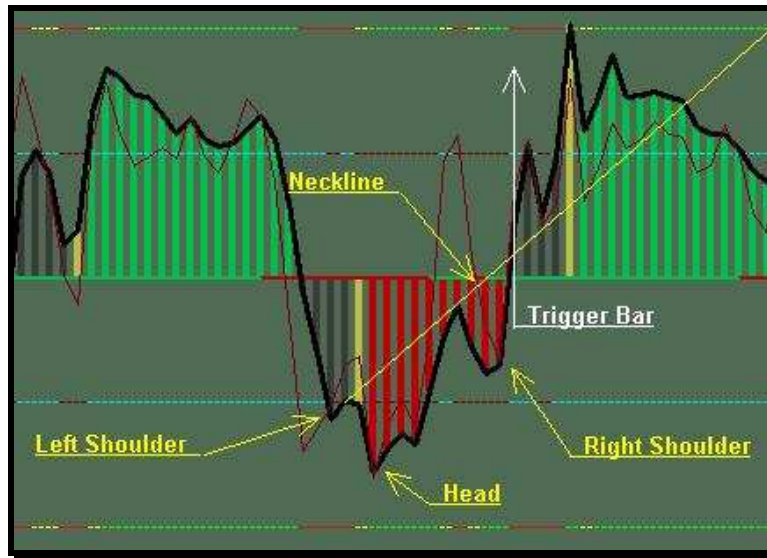


Fig. 2 - Woodie Countertrend Inverted Ghost Pattern

(4) The head and shoulders on The Woodie Countertrend Inverted Ghost Pattern can be as little as 1 bar wide but can be many bars wide, with no maximum.

(5) The Woodie Countertrend Inverted Ghost Pattern head and shoulders can be of any height, from very small to being in extremes (above the +200 on CCI indicator).

(6) The trigger for the Inverted Ghost entry is a break of a trendline called "the neckline". It is hand drawn on CCI indicator (either segment or ray) at the swing highs that create the head and shoulders. The trigger for a Ghost is the breaking of the neckline to the upside. Entry can be Conservative, Aggressive, or Very Aggressive.

(7) Woodie has a "preferred location" of the trendline. He wants the neckline to be totally below the zero line on CCI indicator. However, the word "preferred" does not mean Woodie will exclude a neckline that is slightly above the zero line. As of this date, there is no precise way of determining the maximum amount above zero line that is acceptable.

(8) Woodie has a "preferred slope" of ghost neckline. He wants the neckline to slope towards the zero line. However, the word "preferred" does not mean that Woodie will exclude a ghost trade that is angled away from zero line. As of this date, there is no precise and/or acceptable degree angle, so put away your protractors. :)

(9) All Woodie Countertrend Inverted Ghost Patterns are, by nature, a reversal in trend pattern. However, a Countertrend Inverted Ghost pattern has limited potential as a Countertrend Trade while still in a trending market. During trending times, a Countertrend Inverted Ghost Pattern will be very hard to trade with profit. Most countertrend traders will switch to trend trading when trending begins.

Notes: Popular Abbreviations for the Woodie Countertrend Ghost Pattern: inv gho, InvGho, ingh, invgho, IG, ig.

## Woodie's Mittens Countertrend Ghost Pattern

(1) The number of bars **above** the zero line defines the trend on a CCI indicator. The 6th bar (normally green) defines the trend as being upward. This means trend traders are looking for long trades at this point. However, countertrend traders begin to look for shorts via the Woodie Mittens Countertrend Ghost Pattern.

(2) The biggest commonality on the Woodie Mittens Countertrend Ghost Pattern is that no two Woodie Mittens Countertrend Ghost Patterns are the same, they are all different. This concept can be difficult for those new to pattern recognition. If you are looking for a Woodie Mittens Countertrend Ghost Pattern that will have a "specific" and/or "symmetric" quality, you will not be able to see ghost patterns that are "non-specific" and "non-symmetric" by nature. Similar ghost patterns will only be just that, similar.

(3) The Woodie Mittens Countertrend Ghost Pattern, from one ghost to another, will always have different size shoulders, different size heads and will be different in overall size. However, the Mittens Ghost the head and shoulders are normally very similar in size in relationship to each other. The name "Mittens" was coined after Woodie's pet feline that recently passed away; hence this particular pattern can/does look like a cat with pointy ears and small head.

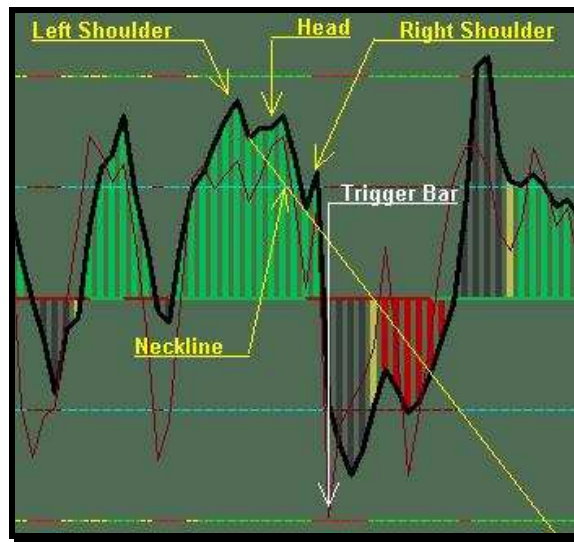


Fig. 3 - Woodie Mittens Countertrend Ghost Pattern

(4) The head and shoulders on The Woodie Mittens Countertrend Ghost Pattern can be as little as 1 bar wide. While the Mittens Pattern does not have a maximum width, the Mittens Pattern normally has a smaller overall width.

(5) The Woodie Mittens Countertrend Ghost Pattern head and shoulders can be of any height. While the Mittens Pattern does not have a maximum height, the Mittens Pattern normally has a smaller overall height.

(6) The trigger for the Ghost entry is a break of a trendline called "the neckline". It is hand drawn on CCI indicator (either segment or ray) at the swing lows that create the head and shoulders. The trigger for the Ghost is the breaking of the neckline to downside. Entry can be Conservative, Aggressive, or Very Aggressive.

(7) Woodie has a "preferred location" of the trendline. He wants the neckline to be totally above the zero line on CCI indicator. However, the word "preferred" does not mean Woodie will exclude a neckline that is slightly below the zero line. As of this date, there is no precise way of determining the maximum amount below zero line that is acceptable.

(8) Woodie has a "preferred slope" of ghost neckline. He wants the neckline to slope towards the zero line. However, the word "preferred" does not mean that Woodie will exclude a ghost trade that is angled away from zero line. As of this date, there is no precise and/or acceptable degree angle, so put away your protractors. :)

(9) All Woodie Mittens Countertrend Ghost Pattern are, by nature, a reversal in trend pattern. However, Woodie Mittens Countertrend Ghost Pattern has limited potential as a Countertrend Trade while the market is still trending. During trending times, a Woodie Mittens Countertrend Ghost Pattern will be very hard to trade with profit. Most countertrend traders will switch to trend trading when trending begins.

Notes: Popular Abbreviations for the Woodie Mittens Countertrend Ghost Pattern: mg, MG.



## Woodie's Mittens Countertrend Inverted Ghost Pattern

(1) The number of bars **above** the zero line defines the trend on a CCI indicator. The 6th bar (normally green) defines the trend as being upward. This means trend traders are looking for long trades at this point. However, countertrend traders begin to look for shorts via the Woodie Mittens Countertrend Inverted Ghost Pattern.

(2) The biggest commonality on the Woodie Mittens Countertrend Inverted Ghost Pattern is that no two Woodie Mittens Countertrend Inverted Ghost Patterns are the same, they are all different. This concept can be difficult for those new to pattern recognition. If you are looking for a Woodie Mittens Countertrend Inverted Ghost Pattern that will have a "specific" and/or "symmetric" quality, you will not be able to see ghost patterns that are "non-specific" and "non-symmetric" by nature. Similar ghosts patterns will only be just that, similar.

(3) The Woodie Mittens Countertrend Inverted Ghost Pattern, from one ghost to another, will always have different size shoulders, different size heads and will be different in overall size. However, with the Mittens Ghost the head and shoulders are normally very similar in size in relationship to each other. The name "Mittens" was coined after Woodie's pet feline that recently passed away; hence this particular pattern can/does look like a cat with pointy ears and small head.

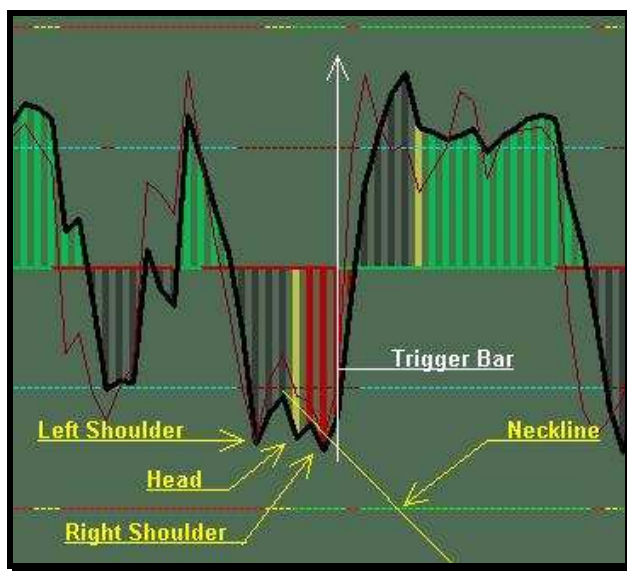


Fig. 4 - Woodie Mittens Countertrend Inverted Ghost Pattern

(4) The head and shoulders on The Woodie Mittens Countertrend Inverted Ghost Pattern can be as little as 1 bar wide. While the Mittens Pattern does not have a maximum width, the Mittens Pattern normally has a smaller overall width.

(5) The Woodie Mittens Countertrend Inverted Ghost Pattern head and shoulders can be of any height. While the Mittens Pattern does not have a maximum height, the Mittens Pattern normally has a smaller overall height.

(6) The trigger for the Ghost entry is a break of a trendline called "the neckline". It is hand drawn on CCI indicator (either segment or ray) at the swing highs that create the head and shoulders. The trigger for the Ghost is the breaking of the neckline to upside. Entry can be Conservative, Aggressive, or Very Aggressive.

(7) Woodie has a "preferred location" of the trendline. He wants the neckline to be totally above the zero line on CCI indicator. However, the word "preferred" does not mean Woodie will exclude a neckline that is slightly below the zero line. As of this date, there is no precise way of determining the maximum amount below zero line that is acceptable.

(8) Woodie has a "preferred slope" of ghost neckline. He wants the neckline to slope towards the zero line. However, the word "preferred" does not mean that Woodie will exclude a ghost trade that is angled away from zero line. As of this date, there is no precise degree angle, so put away your protractors. :)

(9) All Woodie Mittens Countertrend Inverted Ghost Pattern are, by nature, a reversal in trend pattern. However, Woodie Mittens Countertrend Inverted Ghost Pattern has limited potential as a Countertrend Trade while still in a trending market. During trending times, a Woodie Mittens Countertrend Inverted Ghost Pattern will be very hard to trade with profit. Most countertrend traders will switch to trend trading when trending begins.

Notes: Popular Abbreviations for the Woodie Mittens Countertrend Inverted Ghost Pattern: mig, MIG.

## Woodie Hands Up Countertrend Ghost Pattern

(1) The number of bars **above** the zero line defines the trend on a CCI indicator. The 6th bar (normally green) defines the trend as being upward. This means trend traders are looking for long trades at this point. However, countertrend traders begin to look for shorts via the Woodie Hands Up Countertrend Ghost Pattern.

(2) The biggest commonality on the Woodie Hands Up Countertrend Ghost Pattern is that no two Woodie's Hands Up Countertrend Ghost Patterns are the same, they are all different. This concept can be difficult for those new to pattern recognition. If you are looking for a Woodie Hands Up Countertrend Ghost Pattern that will have a "specific" and/or "symmetric" quality, you will not be able to see ghost patterns that are "non-specific" and "non-symmetric" by nature. Similar ghost patterns will only be just that, similar.

(3) The Woodie Hands Up Countertrend Ghost Pattern, from one ghost to another, will always have different size shoulders, different size heads. However, with the Hands Up Ghost the shoulders will always be taller than the head. The term "Hands Up" was given to this pattern as a parody, because of the hands (shoulders) being in up in the air (higher than the head) and the trader robbing the market. ☺

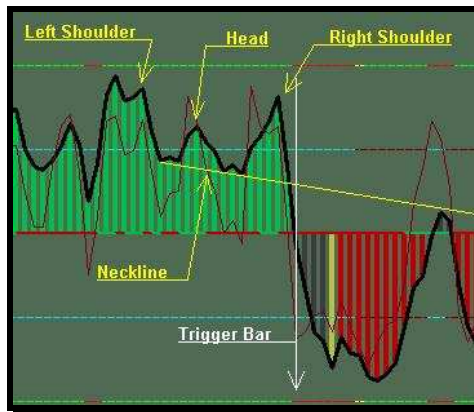


Fig. 5 - Woodie's Hands Up Countertrend Ghost Pattern

(4) The head and shoulders on The Woodie Hands Up Countertrend Ghost Pattern can be as little as 1 bar wide but can be many bars wide, no maximum. However, it has been noted that Hands Up Ghost can/does have more bars of width associated with the shoulders than for the head.

(5) The Woodie Hands Up Countertrend Ghost Pattern shoulders can be of any height, from very small to being in extremes, but the head will always be smaller than the shoulders.

(6) The trigger for the Ghost entry is a break of a trendline called "the neckline". It is hand drawn on CCI indicator (either segment or ray) at the swing lows that create the head and shoulders. The trigger for the Ghost is the breaking of neckline to downside. Entry can be Conservative, Aggressive, or Very Aggressive.

(7) Woodie has a "preferred location" of the trendline. He wants the neckline to be totally above the zero line on CCI indicator. However, the word "preferred" does not mean Woodie will exclude a neckline that is slightly below the zero line. As of this date, there is no precise way of determining the maximum amount below zero line that is acceptable.

(8) Woodie has a "preferred slope" of ghost neckline. He wants the neckline to slope towards the zero line. However, the word "preferred" does not mean that Woodie will exclude a ghost trade that is angled away from zero line. As of this date, there is no precise degree angle, so again, put away your protractors. :)

(9) All Woodie Hands Up Countertrend Ghost Pattern are, by nature, a reversal in trend pattern. However, a Countertrend Ghost pattern has limited potential as a Countertrend Trade while still in trending market. During trending times, a Woodie Hands Up Countertrend Ghost Pattern will be very hard to trade with profit. Most countertrend traders will switch to trend trading when trending begins.

Notes: Popular Abbreviations for the Woodie Countertrend Ghost Pattern: hugho, HuGho.

## Woodie Hands Up Countertrend Inverted Ghost Pattern

(1) The number of bars **below** the zero line defines the trend on a CCI indicator. The 6th bar (normally red) defines the trend as being downward. This means trend traders are looking for short trades at this point. However, countertrend traders begin to look for longs via the Woodie Hands Up Countertrend Inverted Ghost Pattern.

(2) The biggest commonality on the Woodie Hands Up Countertrend Inverted Ghost Pattern is that no two Woodie Hands Up Countertrend Inverted Ghost Patterns are the same, they are all different. This concept can be difficult for those new to pattern recognition. If you are looking for a Woodie Hands Up Countertrend Inverted Ghost Pattern that will have a "specific" and/or "symmetric" quality, you will not be able to see ghost patterns that are "non-specific" and "non-symmetric" by nature. Similar ghost patterns will only be just that, similar.

(3) The Woodie Hands Up Countertrend Inverted Ghost Pattern, from one ghost to another, will always have different size shoulders, different size heads. However, with the Hands Up Ghost the shoulders will always be taller than the head. The term "Hands Up" was given to this pattern as a parody, because of the hands (shoulders) being in up in the air (higher than the head) and the trader robbing the market. ☺

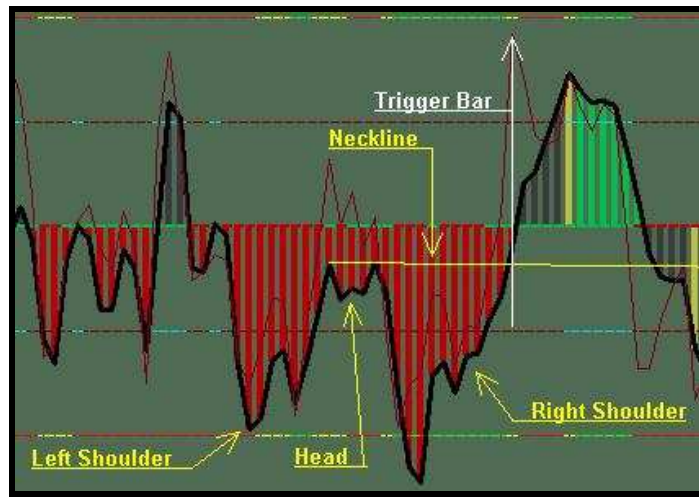


Fig. 6 - Woodie's Hands Up Countertrend Inverted Ghost Pattern

(4) The head and shoulders on The Woodie Hands Up Countertrend Inverted Ghost Pattern can be as little as 1 bar wide but can be many bars wide, with no maximum. However, it has been noted that Hands Up Ghost can/does have more bars of width associated with the shoulders than with the head.

(5) The Woodie Hands Up Countertrend Inverted Ghost Pattern shoulders can be of any height, from very small to being in extremes, but the head will always be smaller than the shoulders.

(6) The trigger for the Ghost entry is a break of a trendline called "the neckline". It is hand drawn on CCI indicator (either segment or ray) at the swing highs that create the head and shoulders. The trigger for the Ghost is the breaking of neckline to upside. Entry can be Conservative, Aggressive, or Very Aggressive.

(7) Woodie has a "preferred location" of the trendline. He wants the neckline to be totally above the zero line on CCI indicator. However, the word "preferred" does not mean Woodie will exclude a neckline that is slightly below the zero line. As of this date, there is no precise way of determining the maximum amount below zero line that is acceptable.

(8) Woodie has a "preferred slope" of ghost neckline. He wants the neckline to slope towards the zero line. However, the word "preferred" does not mean that Woodie will exclude a ghost trade that is angled away from zero line. As of this date, there is no precise and/or acceptable degree angle, so put away your protractors. :)

(9) All Woodie Hands Up Countertrend Inverted Ghost Pattern are, by nature, a reversal in trend pattern. However, a Countertrend Ghost pattern has limited potential as a Countertrend Trade while still in trending market. During trending times, a Woodie Hands Up Countertrend Inverted Ghost Pattern will be very hard to trade with profit. Most countertrend traders will switch to trend trading when trending begins.

Notes: Popular Abbreviations for the Woodie Countertrend Ghost Pattern: inv hugho, InvHuGho.



## Inverted Hollow Ghost Up Trending

(1) Definition of an Inverted Hollow Ghost is simply a ghost pattern that appears on the CCI indicator but is void of CCI bars; hence the phrase hollow ghost.

(2) The number of bars **above** the zero line defines the trend on a CCI indicator. The 6th bar defines the trend as being upward. This means trend traders are looking for long trades at this point. The Hollow Ghost Up Trending trader will now be looking for longs.

(3) The biggest commonality on the Inverted Hollow Ghost Up Trending Pattern is that no two Inverted Hollow Ghost Up Trending Patterns are the same, they are all different. This concept can be difficult for those new to pattern recognition. If you are looking for a Inverted Hollow Ghost Up Trending Pattern that will have a "specific" and/or "symmetric" quality, you will not be able to see ghost patterns that are "non-specific" and "non-symmetric" by nature. Similar ghosts patterns will only be just that, similar.

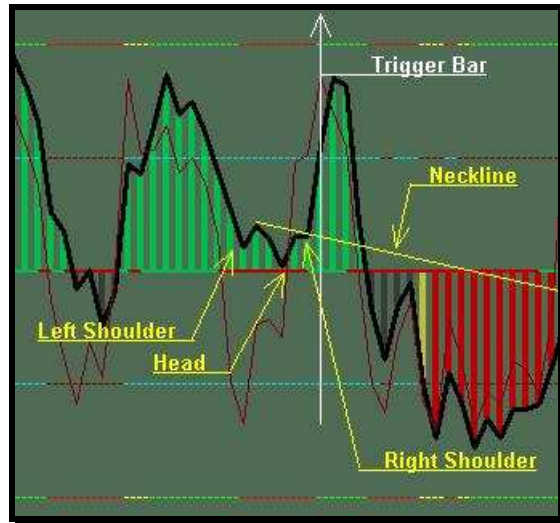


Fig. 7 - Inverted Hollow Ghost Up Trending Pattern

(4) The head and shoulders on The Inverted Hollow Ghost Up Trending Pattern can be as little as 1 bar wide but can be many bars wide, with no maximum. However, as this pattern can be in combination with "Zero Line Rejects" or "Momentum Reversal" patterns, they are normally smaller patterns.

(5) The Inverted Hollow Ghost Up Trending Pattern head and shoulders can be of any height. However, both head and shoulders are limited to shapes and sizes relative to normal "Zero Line Rejects" and/or "Momentum Reversal" patterns.

(6) The trigger for the Ghost entry is a break of a trendline called "the neckline". It is hand drawn on CCI indicator (either segment or ray) at the swing highs that create the head and shoulders. The trigger for the Ghost is the breaking of neckline to upside. Entry can be Conservative, Aggressive, or Very Aggressive.

(7) Woodie does not trade Inverted Hollow Ghost Up Trending Pattern in any form. However, the "preferred location" of the trendline can be anywhere.

(8) Woodie does not trade the Inverted Hollow Ghost Up Trending Pattern in any form. However, the "preferred angle" of the trendline can be at any angle.

(9) All Inverted Hollow Ghost Up Trending Patterns are, by nature, a trend following pattern and are very useful when market is trending upward.

Notes: Popular Abbreviations for the Inverted Hollow Ghost Up Trending Patterns: inv hg, InvHg, ingh, invhgo, IHG, ihg.

## Hollow Ghost Down Trending Pattern

(1) Definition of an Hollow Ghost Down Trending Pattern is simply a ghost pattern that appears on the CCI indicator but is void of CCI bars; hence the phrase hollow ghost.

(2) The number of bars **below** the zero line defines the trend on a CCI indicator. The 6th bar (normally red) defines the trend as being downward. This means trend traders are looking for short trades at this point. The Hollow Ghost Down Trending trader will now be looking for shorts.

(2) The biggest commonality on the Hollow Ghost Down Trending Pattern is that no two Hollow Ghost Down Trending Patterns are the same, they are all different. This concept can be difficult for those new to pattern recognition. If you are looking for a Hollow Ghost Down Trending Pattern that will have a "specific" and/or "symmetric" quality, you will not be able to see ghost patterns that are "non-specific" and "non-symmetric" by nature. Similar ghosts patterns will only be just that, similar.

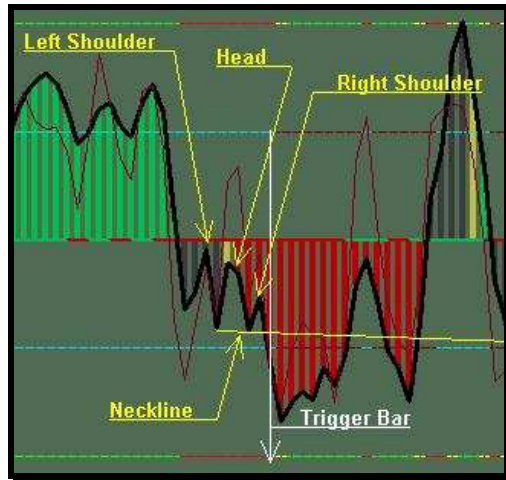


Fig. 8 - Hollow Ghost Down Trending Pattern

(4) The head and shoulders on The Hollow Ghost Down Trending Pattern can be as little as 1 bar wide but can be many bars wide, with no maximum. However, since this pattern can be in combination with "Zero Line Rejects" or "Momentum Reversal" patterns, they are normally smaller patterns.

(5) The Hollow Ghost Down Trending Pattern head and shoulders can be of any height. However, both head and shoulders are limited to shapes and sizes relative to normal "Zero Line Rejects" and/or "Momentum Reversal" patterns.

(6) The trigger for the Ghost entry is a break of a trendline called "the neckline". It is hand drawn on CCI indicator (either segment or ray) at the swing lows that create the head and shoulders. The trigger for the Ghost is the breaking of neckline to downside. Entry can be Conservative, Aggressive, or Very Aggressive.

(7) Woodie does not trade Hollow Ghost Down Trending Pattern in any form. However, the "preferred location" of the trendline can be anywhere.

(8) Woodie does not trade the Hollow Ghost Down Trending Pattern in any form. However, the "preferred angle" of the trendline can be at any angle.

(9) All Hollow Ghost Down Trending Patterns are, by nature, a trend following pattern and are very useful when market is trending downward.

Notes: Popular Abbreviations for the Inverted Hollow Ghost Up Trending Patterns: hg, Hg, Hgh.

## Hollow Ghost Countertrend Pattern

(1) Definition of a Hollow Ghost Countertrend Pattern is simply a ghost pattern that appears on the CCI indicator but is void of CCI bars; hence the phrase hollow ghost.

(2) The number of bars **above** the zero line defines the trend on a CCI indicator. The 6th bar (normally green) defines the trend as being upward. This means trend traders are looking for long trades at this point. The Hollow Ghost Countertrend Pattern trader will now be looking for shorts.

(3) The biggest commonality on the Hollow Ghost Countertrend Pattern is that no two Hollow Ghost Countertrend Patterns are the same, they are all different. This concept can be difficult for those new to pattern recognition. If you are looking for a Hollow Ghost Countertrend Pattern that will have a "specific" and/or "symmetric" quality, you will not be able to see ghost patterns that are "non-specific" and "non-symmetric" by nature. Similar ghosts patterns will only be just that, similar.



Fig. 9 - Hollow Ghost Countertrend Pattern

(4) The head and shoulders on The Hollow Ghost Countertrend Pattern can be as little as 1 bar wide but can be many bars wide, with no maximum. However, as this pattern can be in combination with "Zero Line Rejects" or "Momentum Reversal" patterns, they are normally smaller patterns.

(5) The Hollow Ghost Countertrend Pattern head and shoulders can be of any height. However, both head and shoulders are limited to shapes and sizes relative to normal "Zero Line Rejects" and/or "Momentum Reversal" patterns.

(6) The trigger for the Ghost entry is a break of a trendline called "the neckline". It is hand drawn on CCI indicator (either segment or ray) at the swing lows that create the head and shoulders. The trigger for the Ghost is the breaking of neckline to downside. Entry can be Conservative, Aggressive, or Very Aggressive.

(7) Woodie does not trade Hollow Ghost Countertrend Pattern in any form. However, the "preferred location" of the trendline can be anywhere.

(8) Woodie does not trade the Hollow Ghost Countertrend Pattern in any form. However, the "preferred angle" of the trendline can be at any angle.

(9) All Hollow Ghost Countertrend Patterns are, by nature, a countertrend pattern and are very useful when market is not trending.

Notes: Popular Abbreviations for the Hollow Ghost Countertrend Patterns: hg, Hg, Hgh.

## Inverted Hollow Ghost, Countertrend Pattern

(1) Definition of a Hollow Ghost is simply a ghost pattern that appears on the CCI indicator but is void of CCI bars; hence the phrase hollow ghost.

(2) The number of bars **below** the zero line defines the trend on a CCI indicator. The 6th bar defines the trend as being downward. This means trend traders are looking for short trades at this point. The Inverted Hollow Ghost Countertrend trader will now be looking for longs.

(3) The biggest commonality on the Inverted Hollow Ghost Countertrend Pattern is that no two Inverted Hollow Ghost Countertrend Patterns are the same, they are all different. This concept can be difficult for those new to pattern recognition. If you are looking for a Inverted Hollow Ghost Countertrend Pattern that will have a "specific" and/or "symmetric" quality, you will not be able to see ghost patterns that are "non-specific" and "non-symmetric" by nature. Similar ghosts patterns will only be just that, similar.

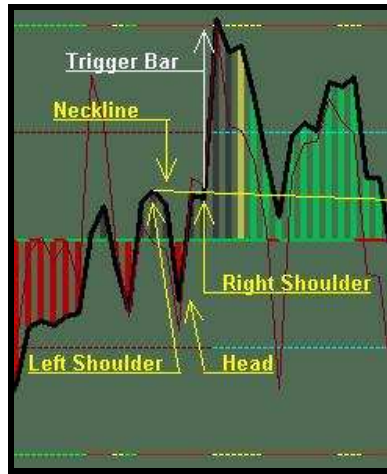


Fig. 10 - Inverted Hollow Ghost Countertrend Pattern

(4) The head and shoulders on The Inverted Hollow Ghost Countertrend Pattern can be as little as 1 bar wide but can be many bars wide, with no maximum. However, since this pattern can be in combination with "Zero Line Rejects" or "Momentum Reversal" patterns, they are normally smaller patterns.

(5) The Inverted Hollow Ghost Countertrend Pattern head and shoulders can be of any height. However, both head and shoulders are limited to shapes and sizes relative to normal "Zero Line Rejects" and/or "Momentum Reversal" patterns.

(6) The trigger for the Ghost entry is a break of a trendline called "the neckline". It is hand drawn on CCI indicator (either segment or ray) at the swing highs that create the head and shoulders. The trigger for the Ghost is the breaking of neckline to upside. Entry can be Conservative, Aggressive, or Very Aggressive.

(7) Woodie does not trade Hollow Ghost Countertrend Pattern in any form. However, the "preferred location" of the trendline can be anywhere.

(8) Woodie does not trade the Hollow Ghost Countertrend Pattern in any form. However, the "preferred angle" of the trendline can be at any angle.

(9) All Inverted Hollow Ghost Countertrend Patterns are, by nature, a countertrend pattern and are very useful when market is not trending.

Notes: Popular Abbreviations for the Hollow Ghost Countertrend Patterns: inv hg, InHg, InHgh.

## Split Neckline Ghost Pattern

(1) The number of bars **above** the zero line defines the trend on a CCI indicator. The 6th bar (normally green) defines the trend as being upward. This means trend traders are looking for long trades at this point. However, countertrend traders begin to look for shorts via the Split Neckline Ghost Pattern.

(2) The biggest commonality on the Split Neckline Ghost Pattern is that no two Split Neckline Ghost Patterns are the same, they are all different. This concept can be difficult for those new to pattern recognition. If you are looking for a Split Neckline Ghost Pattern that will have a "specific" and/or "symmetric" quality, you will not be able to see ghost patterns that are "non-specific" and "non-symmetric" by nature. Similar ghosts patterns will only be just that, similar.

(3) The Split Neckline Ghost Pattern, from one ghost to another, will always have different size shoulders, different size heads and will be different in overall size. Therefore, the phrase "weak (left or right) shoulder", "head too big/small", does not apply because they are all different via the nature of the market.

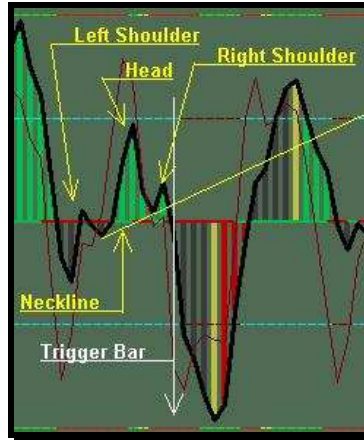


Fig. 11 - Split Neckline Ghost Pattern

(4) The head and shoulders on The Split Neckline Ghost Pattern can be as little as 1 bar wide but can be many bars wide, with no maximum.

(5) The Countertrend Ghost Pattern head and shoulders can be of any height, from very small to being in extremes.

(6) The trigger for the Ghost entry is a break of a trendline called "the neckline". It is hand drawn on CCI indicator (either segment or ray) at the swing lows that create the head and shoulders. The trigger for the Ghost is the breaking of neckline to downside. Entry can be Conservative, Aggressive, or Very Aggressive.

(7) Woodie has a "preferred location" of the trendline. He wants the neckline to be totally above the zero line on CCI indicator. However, the word "preferred" does not mean Woodie will exclude a neckline that is slightly below the zero line on one side, hence the name "Split Neckline Ghost".

(8) Woodie has a "preferred slope" of ghost neckline. He wants the neckline to slope towards the zero line. However, the word "preferred" does not mean that Woodie will exclude a ghost trade that is angled away from zero line. As of this date, there is no precise and/or acceptable degree angle, so put away your protractors. :)

(9) All Split Neckline Ghost Patterns are, by nature, a reversal in trend pattern. However, a Split Neckline Ghost Pattern has limited potential as a Countertrend Trade while still in a trending market. During trending times, a Split Neckline Ghost Pattern will be very hard to trade with profit. Most countertrend traders will switch to trend trading when trending begins.

Notes: Popular Abbreviations for the Countertrend Ghost Pattern: SplitNecklineGho, sng.



## Split Neckline Inverted Ghost Pattern

(1) The number of bars **below** the zero line defines the trend on a CCI indicator. The 6th bar (normally green) defines the trend as being downward. This means trend traders are looking for short trades at this point. However, countertrend traders begin to look for longs via the Split Neckline Inverted Ghost Pattern.

(2) The biggest commonality on the Split Neckline Inverted Ghost Pattern is that no two Split Neckline Inverted Ghost Patterns are the same, they are all different. This concept can be difficult for those new to pattern recognition. If you are looking for a Split Neckline Inverted Ghost Pattern that will have a "specific" and/or "symmetric" quality, you will not be able to see ghost patterns that are "non-specific" and "non-symmetric" by nature. Similar ghost patterns will only be just that, similar.

(3) The Split Neckline Inverted Ghost Pattern, from one ghost to another, will always have different size shoulders, different size heads and will be different in overall size. Therefore, the phrase "weak (left or right) shoulder", "head too big/small", does not apply because they are all different via the nature of the market.

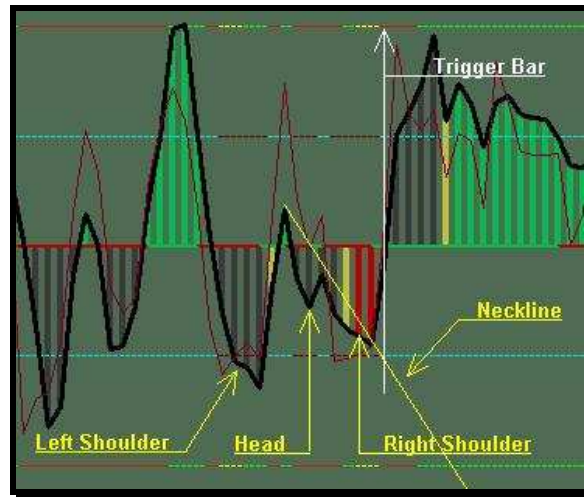


Fig. 12 - Split Neckline Inverted Ghost Pattern

(4) The head and shoulders on The Split Neckline Inverted Ghost Pattern can be as little as 1 bar wide but can be many bars wide, with no maximum.

(5) The Countertrend Inverted Ghost Pattern head and shoulders can be of any height, from very small to being in extremes.

(6) The trigger for the Ghost entry is a break of a trendline called "the neckline". It is hand drawn on CCI indicator (either segment or ray) at the swing highs that create the head and shoulders. The trigger for the Ghost is the breaking of trendline to upside. Entry can be Conservative, Aggressive, or Very Aggressive.

(7) Woodie has a "preferred location" of the trendline. He wants the neckline to be totally above the zero line on CCI indicator. However, the word "preferred" does not mean Woodie will exclude a neckline that is slightly above the zero line on one side, hence the name "Split Neckline Inverted Ghost".

(8) Woodie has a "preferred slope" of ghost neckline. He wants the neckline to slope towards the zero line. However, the word "preferred" does not mean that Woodie will exclude a ghost trade that is angled away from zero line. As of this date, there is no precise and/or acceptable degree angle, so put away your protractors. :)

(9) All Split Neckline Inverted Ghost Patterns are, by nature, a reversal in trend pattern. However, a Split Neckline Ghost Pattern has limited potential as a Countertrend Trade while still in a trending market. During trending times, a Split Neckline Inverted Ghost Pattern will be very hard to trade with profit. Most countertrend traders will switch to trend trading when trending begins.

Notes: Popular Abbreviations for the Countertrend Inverted Ghost Pattern: SplitNecklineInvGho, snig.

## Neckline Totally Below Zero Line Countertrend Ghost Pattern

(1) The number of bars **above** the zero line defines the trend on a CCI indicator. The 6th bar (normally green) defines the trend as being upward. This means trend traders are looking for long trades at this point. However, countertrend traders begin to look for shorts via the Neckline Totally Below Zero Line Countertrend Ghost Pattern.

(2) The biggest commonality on the Neckline Totally Below Zero Line Countertrend Ghost Pattern is that no two Neckline Totally Below Zero Line Countertrend Ghost Patterns are the same, they are all different. This concept can be difficult for those new to pattern recognition. If you are looking for a Neckline Totally Below Zero Line Countertrend Ghost Pattern that will have a "specific" and/or "symmetric" quality, you will not be able to see ghost patterns that are "non-specific" and "non-symmetric" by nature. Similar ghosts patterns will only be just that, similar.

(3) The Neckline Totally Below Zero Line Countertrend Ghost Pattern, from one ghost to another, will always have different size shoulders, different size heads and will be different in overall size. Therefore, the phrase "weak (left or right) shoulder", "head too big/small", does not apply because they are all different via the nature of the market.



Fig. 13 - Neckline Totally Below Zero Line Countertrend Ghost Pattern

(4) The head and shoulders on The Neckline Totally Below Zero Line Countertrend Ghost Pattern can be as little as 1 bar wide but can be many bars wide, with no maximum.

(5) The Neckline Totally Below Zero Line Countertrend Ghost Pattern head and shoulders can be of any height, from very small to being in extremes.

(6) The trigger for the Ghost entry is a break of a trendline called "the neckline". It is hand drawn on CCI indicator (either segment or ray) at the swing lows that create the head and shoulders. The trigger for the Ghost is the breaking of neckline to downside. Entry can be Conservative, Aggressive, or Very Aggressive.

(7) Woodie has a "preferred location" of the trendline. He wants the neckline to be totally above the zero line on CCI indicator. However, the word "preferred" does not mean Woodie will exclude a neckline that is slightly below the zero line. As of this date, there is no precise way of determining the maximum amount below zero line that is acceptable.

(8) Woodie has a "preferred slope" of ghost neckline. He wants the neckline to slope towards the zero line. However, the word "preferred" does not mean that Woodie will exclude a ghost trade that is angled away from zero line. As of this date, there is no precise and/or acceptable degree angle, so put away your protractors. :)

(9) All Neckline Totally Below Zero Line Countertrend Ghost Patterns are, by nature, a reversal in trend pattern. However, a Neckline Totally Below Zero Line Countertrend Ghost Pattern has limited potential as a Countertrend Trade while still in trending market. During trending times, a Neckline Totally Below Zero Line Countertrend Ghost Pattern will be very hard to trade with profit. Most countertrend traders will switch to trend trading when trending begins.

Notes: Popular Abbreviations for the Woodie Countertrend Ghost Pattern: Gho, gh, gho, G, g.

## Neckline Totally Above Zero Line Countertrend Inverted Ghost Pattern

(1) The number of bars **below** the zero line defines the trend on a CCI indicator. The 6th bar (normally red) defines the trend as being downward. This means trend traders are looking for short trades at this point. However, countertrend traders begin to look for longs via the Neckline Totally Above Zero Line Countertrend Ghost Pattern.

(2) The biggest commonality on the Neckline Totally Above Zero Line Countertrend Inverted Ghost Pattern is that no two Neckline Totally Above Zero Line Countertrend Inverted Ghost Patterns are the same, they are all different. This concept can be difficult for those new to pattern recognition. If you are looking for a Neckline Totally Above Zero Line Countertrend Inverted Ghost Pattern that will have a "specific" and/or "symmetric" quality, you will not be able to see ghost patterns that are "non-specific" and "non-symmetric" by nature. Similar ghosts patterns will only be just that, similar.

(3) The Neckline Totally Above Zero Line Countertrend Inverted Ghost Patterns, from one ghost to another, will always have different size shoulders, different size heads and will be different in overall size. Therefore, the phrase "weak (left or right) shoulder", "head too big/small", does not apply because they are all different via the nature of the market.

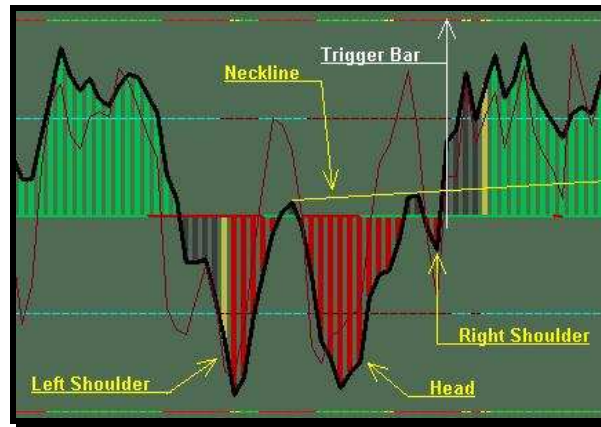


Fig. 14 - Neckline Totally Above Zero Line Countertrend Inverted Ghost Pattern

(4) The head and shoulders on The Neckline Totally Above Zero Line Countertrend Inverted Ghost Pattern can be as little as 1 bar wide but can be many bars wide, with no maximum.

(5) The Neckline Totally Above Zero Line Countertrend Inverted Ghost Pattern head and shoulders can be of any height, from very small to being in extremes.

(6) The trigger for the Ghost entry is a break of a trendline called "the neckline". It is hand drawn on CCI indicator (either segment or ray) at the swing highs that create the head and shoulders. The trigger for the Ghost is the breaking of neckline to upside. Entry can be Conservative, Aggressive, or Very Aggressive.

(7) Woodie has a "preferred location" of the trendline. He wants the neckline to be totally above the zero line on CCI indicator. However, the word "preferred" does not mean Woodie will exclude a neckline that is slightly below the zero line. As of this date, there is no precise way of determining the maximum amount below zero line that is acceptable.

(8) Woodie has a "preferred slope" of ghost neckline. He wants the neckline to slope towards the zero line. However, the word "preferred" does not mean that Woodie will exclude a ghost trade that is angled away from zero line. As of this date, there is no precise and/or acceptable degree angle, so put away your protractors. :)

(9) All Neckline Totally Above Zero Line Countertrend Inverted Ghost Patterns are, by nature, a reversal in trend pattern. However, a Neckline Totally Above Zero Line Countertrend Inverted Ghost Pattern has limited potential as a Countertrend Trade while still in trending market. During trending times, a Neckline Totally Above Zero Line Countertrend Inverted Ghost Pattern will be very hard to trade with profit. Most countertrend traders will switch to trend trading when trending begins.

Notes: Popular Abbreviations for the Woodie Countertrend Ghost Pattern: InvGho, inv gh.

## Neckline Totally Below Zero Line Trending Ghost Pattern

(1) The number of bars **below** the zero line defines the trend on a CCI indicator. The 6th bar (normally red) defines the trend as being downward. This means trend traders are looking for short trades at this point via the Neckline Totally Below Zero Line Trending Ghost Pattern.

(2) The biggest commonality on the Neckline Totally Below Zero Line Trending Ghost Pattern is that no two Neckline Totally Below Zero Line Trending Ghost Patterns are the same, they are all different. This concept can be difficult for those new to pattern recognition. If you are looking for a Neckline Totally Below Zero Line Trending Ghost Pattern that will have a "specific" and/or "symmetric" quality, you will not be able to see ghost patterns that are "non-specific" and "non-symmetric" by nature. Similar ghosts patterns will only be just that, similar.

(3) The Neckline Totally Below Zero Line Trending Ghost Patterns, from one ghost to another, will always have different size shoulders, different size heads and will be different in overall size. Therefore, the phrase "weak (left or right) shoulder", "head too big/small", does not apply because they are all different via the nature of the market.

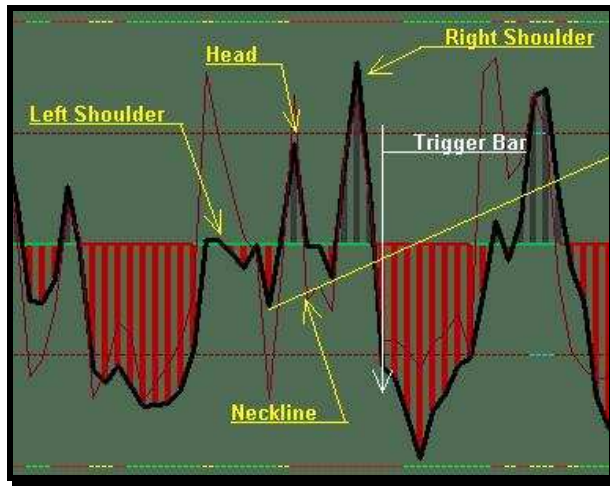


Fig. 15 - Neckline Totally Below Zero Line Trending Ghost Pattern

(4) The head and shoulders on The Neckline Totally Below Zero Line Trending Ghost Pattern can be as little as 1 bar wide but can be many bars wide, with no maximum.

(5) The Neckline Totally Below Zero Line Trending Ghost Pattern head and shoulders can be of any height, from very small to being in extremes extremes.

(6) The trigger for the Ghost entry is a break of a trendline called "the neckline". It is hand drawn on CCI indicator (either segment or ray) at the swing lows that create the head and shoulders. The trigger for the Ghost is the breaking of the neckline to downside. Entry can be Conservative, Aggressive, or Very Aggressive.

(7) Woodie does not trade the Neckline Totally Below Zero Line Trending Ghost Pattern. However, the neckline can be anywhere.

(8) Woodie does not trade the Neckline Totally Below Zero Line Trending Ghost Pattern. However, the "preferred angle" of the trendline can be at any angle.

(9) Most countertrend traders will switch to trend trading when trending begins. All Neckline Totally Below Zero Line Trending Ghost Pattern are, by nature, a trending pattern. A Neckline Totally Below Zero Line Trending Ghost Pattern has much potential as a Trending Trade and can be used while in trending market. During trending times, a Neckline Totally Below Zero Line Trending Ghost Pattern can/will work pretty much like all other trending patterns.

Notes: Popular Abbreviations for the Woodie Countertrend Ghost Pattern: Gho, gh, gho, G, g.

## Neckline Totally Above Zero Line Trending Inverted Ghost Pattern

(1) The number of bars **above** the zero line defines the trend on a CCI indicator. The 6th bar (normally green) defines the trend as being upward. This means trend traders are looking for long trades at this point via the Neckline Totally Above Zero Line Trending Ghost Pattern.

(2) The biggest commonality on the Neckline Totally Above Zero Line Trending Ghost Pattern is that no two Neckline Totally Above Zero Line Trending Ghost Patterns are the same, they are all different. This concept can be difficult for those new to pattern recognition. If you are looking for a Neckline Totally Above Zero Line Trending Ghost Pattern that will have a "specific" and/or "symmetric" quality, you will not be able to see ghost patterns that are "non-specific" and "non-symmetric" by nature. Similar ghost patterns will only be just that, similar.

(3) The Neckline Totally Above Zero Line Trending Ghost Patterns, from one ghost to another, will always have different size shoulders, different size heads and will be different in overall size. Therefore, the phrase "weak (left or right) shoulder", "head too big/small", does not apply because they are all different via the nature of the market.

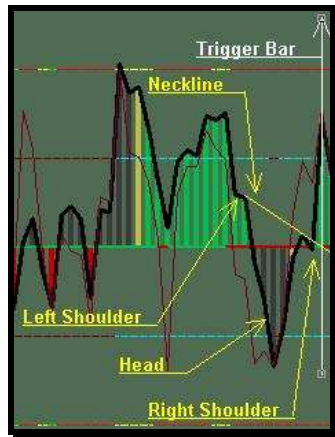


Fig. 16 - Neckline Totally Above Zero Line Trending Ghost Patterns

(4) The head and shoulders on The Neckline Totally Above Zero Line Trending Ghost Pattern can be as little as 1 bar wide but can be many bars wide, with no maximum.

(5) The Neckline Totally Above Zero Line Trending Ghost Pattern head and shoulders can be of any height, from very small to being in extremes.

(6) The trigger for the Ghost entry is a break of a trendline called "the neckline". It is hand drawn on CCI indicator (either segment or ray) at the swing highs that create the head and shoulders. The trigger for the Ghost is the breaking of neckline to upside. Entry can be Conservative, Aggressive, or Very Aggressive.

(7) Woodie does not trade the Neckline Totally Above Zero Line Trending Ghost Pattern. However, the neckline can be anywhere.

(8) Woodie does not trade the Neckline Totally Above Zero Line Trending Ghost Pattern. However, the "preferred angle" of the trendline can be at any angle.

(9) Most countertrend traders will switch to trend trading when trending begins. All Neckline Totally Above Zero Line Trending Ghost Pattern are, by nature, a trending pattern. However, a Neckline Totally Above Zero Line Trending Ghost Pattern has much potential as a Trending Trade and can be used while in trending market. During trending times, a Neckline Totally Above Zero Line Trending Ghost Pattern can/will work pretty much like all other trending patterns.

Notes: Popular Abbreviations for the Woodie Countertrend Ghost Pattern: Gho, gh, gho, G, g.



## Combination Ghost Pattern

(1) The number of bars above the zero line defines the trend on a CCI indicator. The 6th bar (normally green) defines the trend as being upward. This means trend traders are looking for long trades at this point. However, countertrend traders begin to look for shorts via the Combination Ghost Pattern.

(2) The biggest commonality on the Combination Ghost Pattern is that no two Combination Ghost Patterns are the same, they are all different. This concept can be difficult for those new to pattern recognition. If you are looking for a Combination Ghost Pattern that will have a "specific" and/or "symmetric" quality, you will not be able to see ghost patterns that are "non-specific" and "non-symmetric" by nature. Similar ghost patterns will only be just that, similar.

(3) The Combination Ghost Pattern, from one ghost to another, will always have different size shoulders, different size heads and will be different in overall size. Therefore, the phrase "weak (left or right) shoulder", "head too big/small", does not apply because they are all different via the nature of the market.

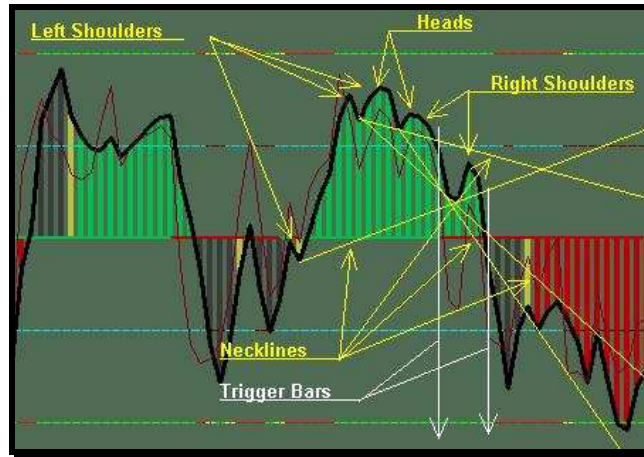


Fig. 17 - Combination Ghost Pattern

(4) The head and shoulders on The Combination Ghost Pattern can be as little as 1 bar wide but can be many bars wide, with no maximum.

(5) The Combination Ghost Pattern head and shoulders can be of any height, from very small to being in extremes.

(6) The trigger for the Ghost entry is a break of a trendline called "the neckline". It is hand drawn on CCI indicator (either segment or ray) at the swing lows that create the head and shoulders. The trigger for the Ghost is the breaking of neckline to downside. Entry can be Conservative, Aggressive, or Very Aggressive. However, with the Combination Ghost Pattern you have the added adventure of having many possible necklines to choose from. Some traders try to limit the entry to near the area where the 14 CCI crosses the +100. As you can see, this not always a good plan.

(7) Woodie does not trade the Combination Ghost Pattern. However, the "preferred location" of the trendline can be anywhere.

(8) Woodie does not trade the Combination Ghost Pattern. However, the "preferred angle" of the trendline can be at any angle.

(9) All Combination Ghost Patterns are, by nature, a reversal in trend pattern. However, a Countertrend Ghost pattern has limited potential as a Combination Ghost Pattern while still in trending market. During trending times, a Combination Ghost Pattern will be very hard to trade with profit. Most countertrend traders will switch to trend trading when trending begins.

Notes: Popular Abbreviations for the Woodie Countertrend Ghost Pattern: combo gho, CoGh.

## Combination Inverted Ghost Pattern

(1) The number of bars **below** the zero line defines the trend on a CCI indicator. The 6th bar (normally red) defines the trend as being downward. This means trend traders are looking for short trades at this point. However, countertrend traders begin to look for longs via the Combination Inverted Ghost Pattern.

(2) The biggest commonality on the Combination Inverted Ghost Pattern is that no two Combination Inverted Ghost Patterns are the same, they are all different. This concept can be difficult for those new to pattern recognition. If you are looking for a Combination Inverted Ghost Pattern that will have a "specific" and/or "symmetric" quality, you will not be able to see ghost patterns that are "non-specific" and "non-symmetric" by nature. Similar ghosts patterns will only be just that, similar.

(3) The Combination Inverted Ghost Pattern, from one ghost to another, will always have different size shoulders, different size heads and will be different in overall size. Therefore, the phrase "weak (left or right) shoulder", "head too big/small", does not apply because they are all different via the nature of the market.

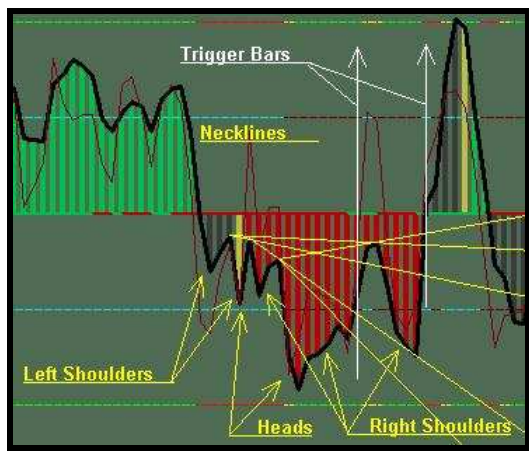


Fig. 18 - Combination Inverted Ghost Pattern

(4) The head and shoulders on The Combination Inverted Ghost Pattern can be as little as 1 bar wide but can be many bars wide, with no maximum.

(5) The Combination Inverted Ghost Pattern head and shoulders can be of any height, from very small to being in extremes extremes.

(6) The trigger for the Ghost entry is a break of a trendline called "the neckline". It is hand drawn on CCI indicator (either segment or ray) at the swing lows that create the head and shoulders. The trigger for the Ghost is the breaking of neckline to the upside. Entry can be Conservative, Aggressive, or Very Aggressive. However, with the Combination Inverted Ghost Pattern you have the added adventure of having many possible necklines to choose from. Some traders try to limit the entry to near the area where the 14 CCI crosses the -100. As you can see, this not always a good plan.

(7) Woodie does not trade the Combination Inverted Ghost Pattern. However, the "preferred location" of the trendline can be anywhere.

(8) Woodie does not trade the Combination Inverted Ghost Pattern. However, the "preferred angle" of the trendline can be at any angle.

(9) All Combination Inverted Ghost Patterns are, by nature, a reversal in trend pattern. However, a Countertrend Inverted Ghost pattern has limited potential as a Combination Ghost Pattern while still in trending market. During trending times, a Combination Inverted Ghost Pattern will be very hard to trade with profit. Most countertrend traders will switch to trend trading when trending begins.

Notes: Popular Abbreviations for the Woodie Countertrend Ghost Pattern: combo inv gho, ColnvGh.

## Woodie CCI Ghost Entry Possibilities

(1) All of the ghost patterns in this document can be entered using one of the Woodie Trader Types;

→ The Conservative Trader will wait until the CCI bar prints through the neckline before entering a trade.

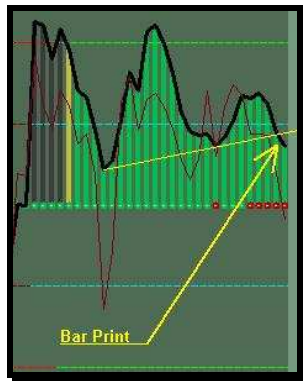


Fig. 19 – Conservative Entry

→ The Aggressive Trader will wait until the last 20 seconds until bar print. If the CCI fails to print through the neckline at bar print, that event can be a reason to exit.

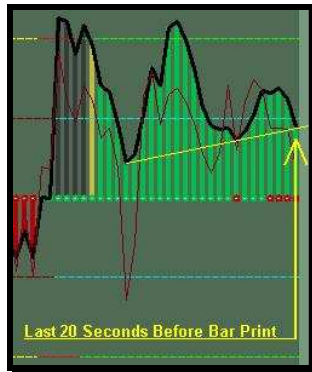


Fig. 20 – Aggressive Entry

→ The Very Aggressive Trader will enter at anytime, even before the CCI has crossed the neckline. If the CCI fails to print through the neckline at bar print, that event can be a reason to exit.



Fig. 21 – Very Aggressive Entry

→ And finally, a Market Dynamic Trader will enter using all three of the above techniques but only when the market will allow for each. If the CCI fails to print through the neckline at bar print, that event can be a reason to exit.

## Woodie CCI Ghost Exit Possibilities

(1) All of the ghost patterns in this document can be exited using any of the following CCI exits;

→ If the 14 CCI were to re-break the ghost neckline in opposite direction of trade at any time during ghost trade (either intrabar or bar print), that can be a reason to exit.

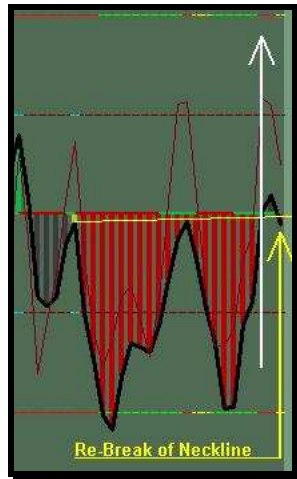


Fig. 22 – Possible Exit #1

→ The CCI hook can be used, either intrabar hook or a bar print hook.

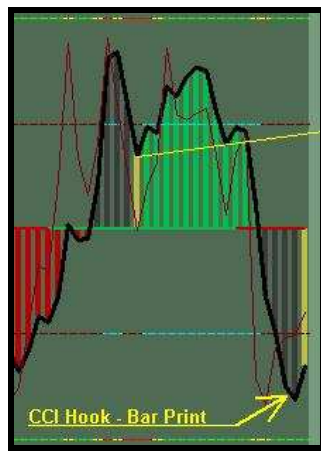


Fig. 23 – Possible Exit #2

→ If CCI is outside the 100's, you can use the re-crossing of the 100's as your exit.

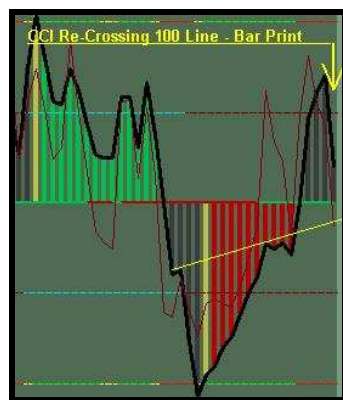


Fig. 24 – Possible Exit #3

→ Trendline exits can also be used. This exit can be difficult using faster charts.



Fig. 25 – Possible Exit #4

→ Hard Targets can be used also, example; Target #1 can be 3 to 6 ticks; Target #2 can be 6 to 12 ticks. Will need to experiment to find what will work for you consistently. However, with hard targets you can miss bigger moves when they happen.

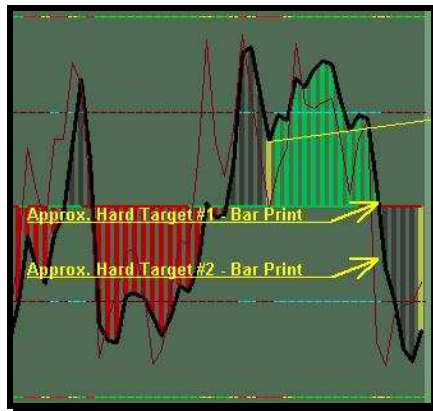


Fig. 26 – Possible Exit #5



## Woodie CCI Ghost Target Nuance

(1) There is a "target" for the Countertrend Ghost Pattern. It's a CCI measurement that is used to determine how far the CCI can/will move on the CCI indicator. It works like this:

- Note the CCI measurement at the top of head. For Hands Up Ghost use top of right shoulder.
- Then subtract CCI measurement at right shoulder neckline.
- Take that CCI amount and add that to downward movement in equal CCI amount.
- Number of ticks and CCI movement will not move in tandem, so it is possible for target to be reached but without profit.
- This nuance is only that, a nuance. It is not 100%.

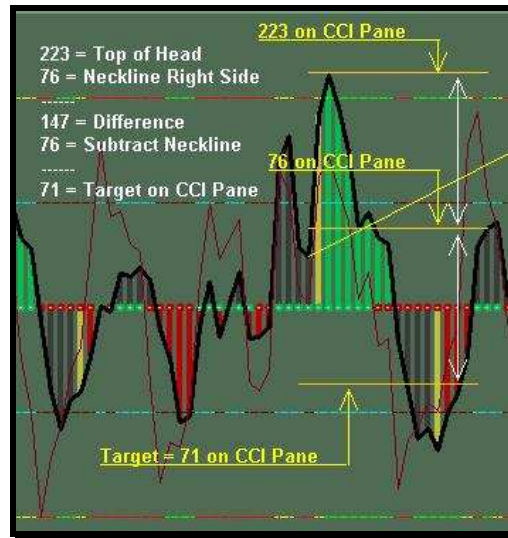


Fig. 27 – Ghost Target Nuance Calculation

## Woodie CCI Ghost Retrace Nuance

(1) The CCI Ghost Retrace Nuance is a trade management Nuance. It is known that many times the CCI will return to its neckline to find resistance (or support) and continue to move in direction of trade;

- This nuance can be called a Famir Trade in some instances.
- This nuance can be used for runners.
- If using neckline for runner, heat can be significant to none.
- This nuance is just that, a nuance. Therefore, it is not 100%.

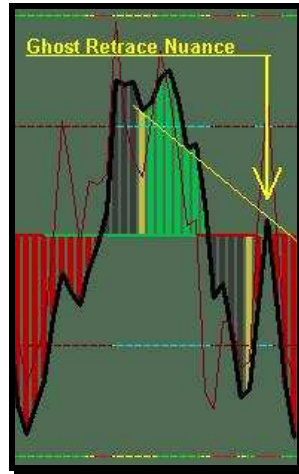


Fig. 28 – Ghost Retrace Nuance

## Woodie CCI Pivot Point Filter

(1) Some CCI traders use the Woodie Pivot Point (PP) as a filter for the ghost pattern. The idea is this;

- There will be many times that a ghost pattern can/will be formed at or near the Woodie Pivot Points. This includes R1, R2, S1 and S2. The end result is that the market can cause the ghost pattern to fail at or near these pivot points.
- When a ghost pattern forms on the 14 CCI indicator above the zero line, (below zero line if inverted ghost was formed below the zero line) it is felt that many traders will not participate in a trade that attempts to go through the Woodie Pivot Point since it can/does act as support (resistance if inverted ghost is below).
- This Filter is not 100% and can cause the filtering of both good and bad ghost trades.

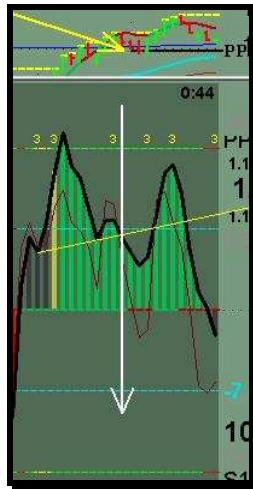


Fig. 29 – Woodie Pivot Point Filter

## Woodie CCI Pivot Point Helper

(1) Some CCI traders use the Woodie Pivot Point (PP) as a helper for the ghost pattern. The idea is this;

- There will be many times that a ghost pattern can/will be formed at or near the Woodie Pivot Points. This includes R1, R2, S1 and S2. If the right shoulder is using a Woodie Pivot Point for either support or resistance, this can help the ghost. The end result is that the market can cause the ghost pattern to fail at or near these pivot points.
- When a ghost pattern forms on the 14 CCI indicator above the zero line, (below zero line if inverted ghost was formed below the zero line) it is felt that many traders will participate in a trade if right shoulder pushes away from a Woodie Pivot Point since it can/does act as resistance (support if inverted ghost is below).
- This Helper is not 100%.

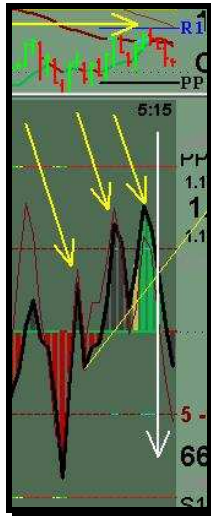


Fig. 30 – Woodie Pivot Point Helper

### *Special Thanks To:*

Woodie; for Mentoring and for the original CCI Ghost Pattern

gb007; for many lessons in Money Management

NickTrader; for the BOT like trading you display day in/out

Guy\_V; for showing me that trend trades are actually ok ☺

DianaC; for all of the wonderful help and suggestions for this document

Mr. Bill Hamm, husband & Woodie CCI Club Member, for Editing and Grammar

Mrs. Dana Hamm  
Woodie CCI Club Member since: 6/27/04  
DOC version 1.0  
DOC date: December 20, 2005

**.....ya gotta love the ghost.....!!**